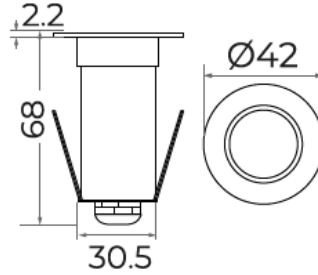




## ZIYA-RU220973

### 1W RECESSED TRAIL LIGHT



### PRODUCT SPECIFICATIONS

Fixture & Trim Material	Grade 316 Stainless Steel
Trim Finish	Polished stainless steel
Glass	Tempered Frosted glass
Sleeve Material	Black Polycarbonate
Binning	3 Step MacAdam
Wiring	1 meter of 2 core 0.75mm <sup>2</sup>
Static Load Pressure	750KG
Life Span	50,000 hours

LED Chip	Nichia
Power Consumption	1W
Input Voltage	180~240VAC, 50/60 Hz
Operating Temperature	from -20° to 65° C
Color Rendering Index	≥85
Driver Protection	Short circuit
Warranty	3 years against manufacturing defects
Agency Approval	CE, RoHS, ETL



Power (W)	Available color Temperatures	Luminous Flux			IP Rating	Available Beam Angles
		3000K	4000K	6000K		
1W	2700K 3000K 4000K 6000K	110lm/W	120lm/W	130lm/W	67	120°

**Standard option.**

Non-standard products may be subject to MOQ. Contact your regional sales representative for more information.