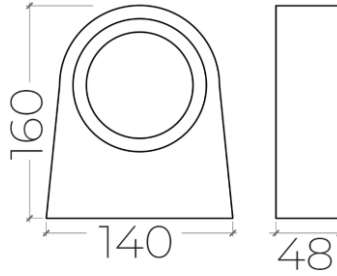
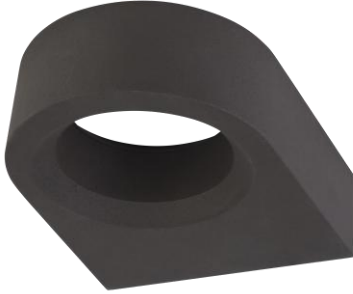




**GLOBAL LIGHT
& POWER LLC**
AN LED LIGHTING COMPANY

NANNA-WL220201

6W UP AND DOWN WALL SCONCE



PRODUCT SPECIFICATIONS

Fixture Material	Die-cast Aluminum
Fixture Finish	Powder-coated Bronze
Diffuser	Clear Polycarbonate
Driver	Built-in
Binning:	3 Step MacAdam
Wiring	Attached wiring compartment
Life Span	50,000 hours

LED Chip	CREE COB
Power Consumption	6W
Input Voltage	180~240V AC, 50/60Hz
Operating Temperature	from -20° to 65° C
Color Rendering Index	>85
Driver Protection	Short circuit
Warranty	3 years against manufacturing defects
Agency Approval	CE, RoHS



Power (W)	Available color Temperatures	LED Chip Lumen Efficacy			IP Rating	Available Beam Angles
		3000K	4000K	6000K		
6W	2700K 3000K 4000K 6000K	80lm/W	85lm/W	90lm/W	65	90°

Standard option.

Non-standard products may be subject to MOQ. Contact your regional sales representative for more information.