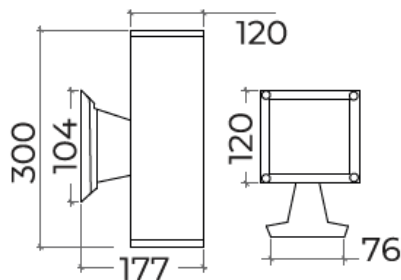




LESEDI-WS220069

17W LARGE UP & DOWN WALL SCNCE



PRODUCT SPECIFICATIONS

Fixture Material	Die-cast Aluminum
Fixture Finish	Powder-coated bronze
Optics	High temperature Japanese Acrylic
Reflector	Polycarbonate with aluminium coating
Glass	Clear glass
Driver	Built-in
Binning	3 Step MacAdam
Wiring	Attached wiring compartment
Life Span	50,000 hours

LED Chip	Nichia
Power Consumption	17W (8.5W Each Side)
Input Voltage	180~240VAC 50/60Hz
Operating Temperature	from -20° to 65° C
Color Rendering Index	>85
Driver Protection	Short circuit
Warranty	3 years against manufacturing defects
Agency Approval	CE, RoHS, ETL



Power (W)	Available color Temperatures	Luminous Flux			IP Rating	Available Beam Angles
		3000K	4000K	6000K		
17W	2700K 3000K 4000K 6000K	110lm/W	120lm/W	130lm/W	65	35° 60°

Standard option.

Non-standard products may be subject to MOQ. Contact your regional sales representative for more information.