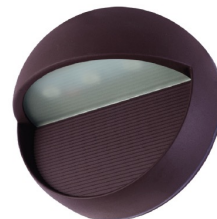


INSTALLATION INSTRUCTIONS

WL220226

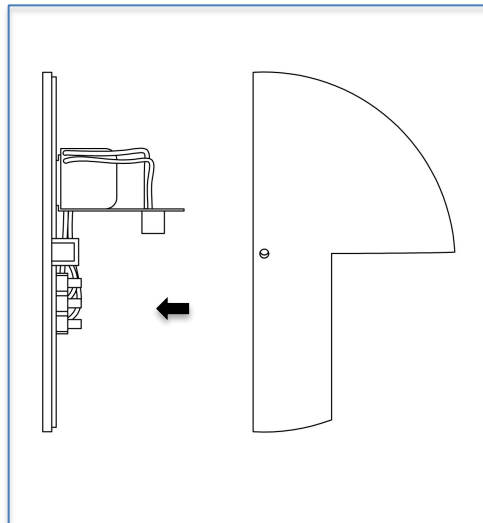
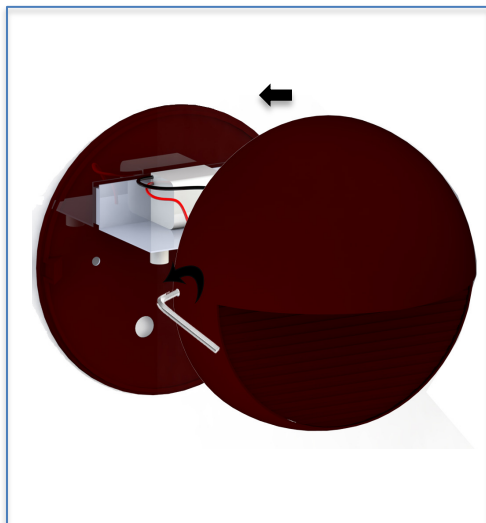
Important Instructions. Please read first.

- Please follow instructions carefully. Failure to do so will void warranty. Please ensure installation complies with local law and applicable standards.
 1. Only use a GLP power supply unit.
 2. Ensure correct input voltage is connected to the luminaire.
 3. Ensure the power is disconnected before making any connections.
 4. Do not make modification or alter the luminaire without written approval of GLP.
 5. Ensure to keep luminaire in a clean area free of debris.

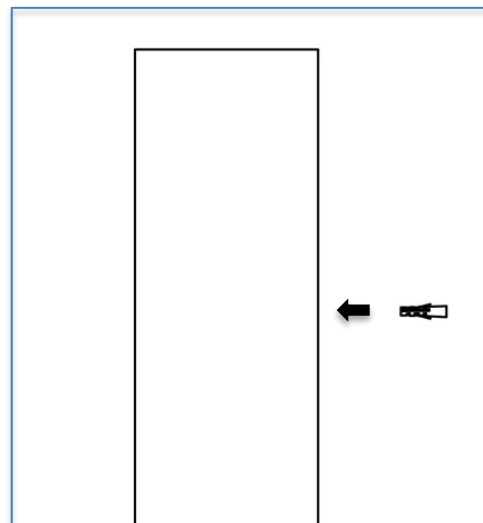
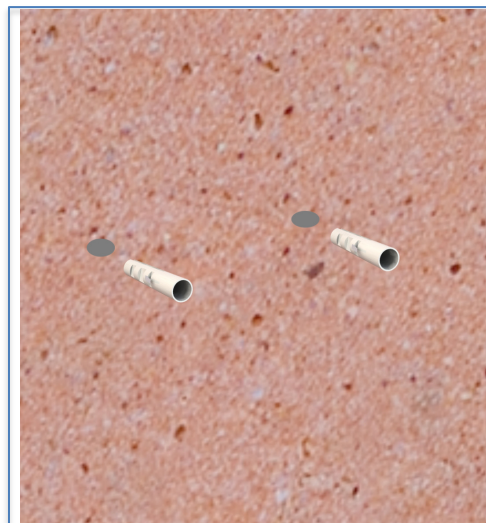


INSTALLATION

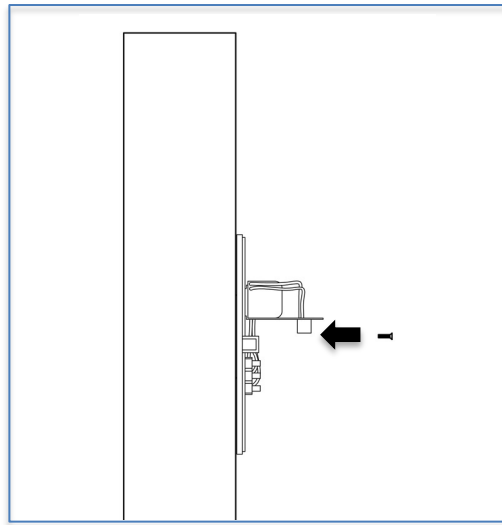
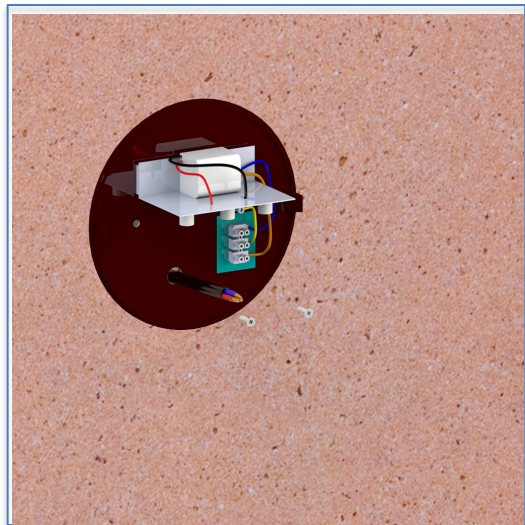
- **Step 1:** Find the location where the luminaire has to be installed. Install a suitable wiring from the power supply (180~250V AC, 50/60Hz) to the luminaire. Remove the top cover with an Allen Key as illustrated



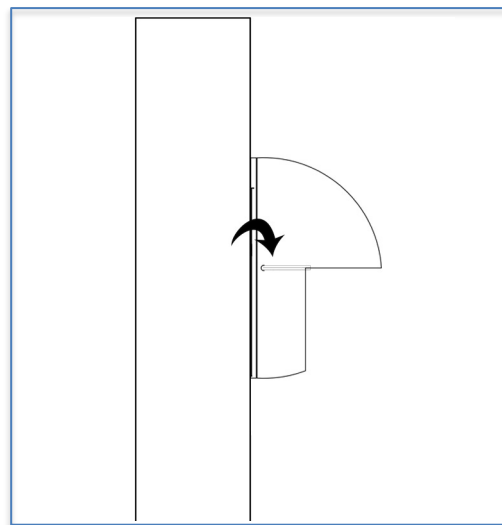
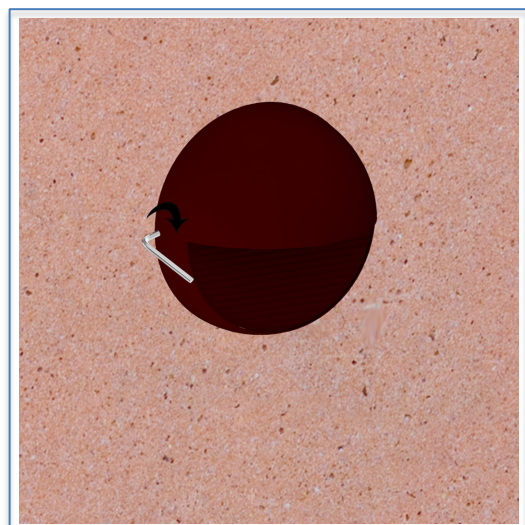
- **Step 3:** Install 2 fischers in the area you wish to surface mount the fixture.



- **Step 3:** Mount the fixture using provided stainless steel screws. Connect the luminaire power cable to the main supply using the luminaires' internal connector. Make sure the earth (ground) wire is reliable as illustrated.



- **Step 3:** Fix the Outer cover using an Allen Key



Make sure the main power is switched off during installation.

All the Installation and Maintenance must be done by Technicians and Professional Engineers